



MILDAR Fire Control Radar



Always On Target

MILDAR is a millimeter wave LPI radar system so as to provide attack helicopters with a fire control capability and optionally navigational aid under low visibility and low altitude flight conditions.

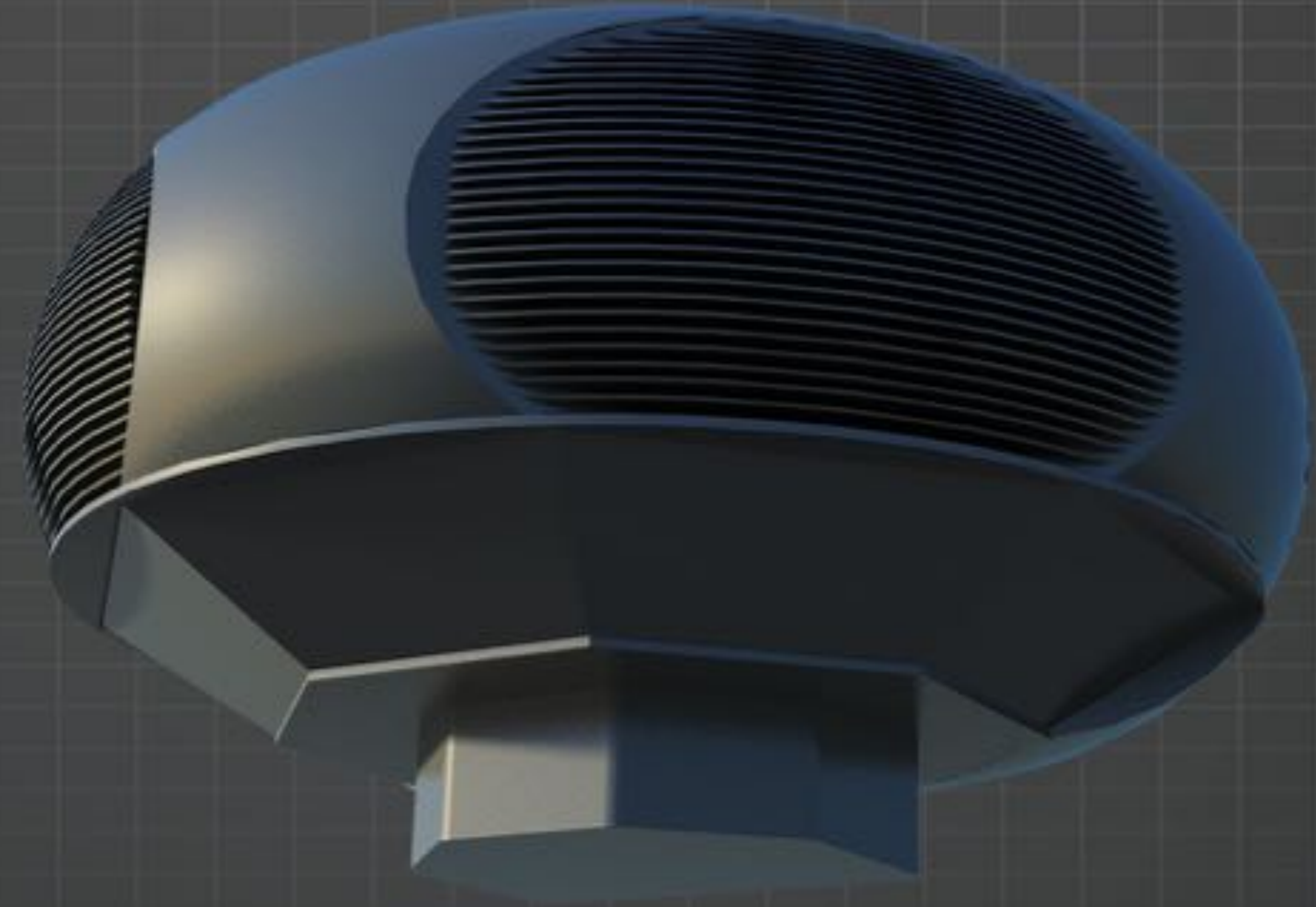
High Survivability and Enhanced Attack Capability

MILDAR is capable of searching, detecting, locating and classifying multiple air and ground targets under all weather conditions. MILDAR having small size, weight, and power (SWAP) characteristics, is ready for light and heavy attack helicopters. It enables weapon engagement for the onboard RF guided missiles.

Within a few seconds after power-up, MILDAR immediately detects the moving targets and begins to track them. MILDAR displays the potential targets in the battlefield and provides pilots with 360-degrees situational awareness. By facilitating the pilots to engage multiple targets, it significantly increases the helicopter's survivability and attacking capability.

MILDAR optionally provides terrain profiling mode for low visibility and low altitude flights. In order to fly safely under those conditions, MILDAR creates terrain topology, artificial and natural obstacles in the radar screen. Terrain profiling enhances the pilots positional awareness during the flight.





See Your Enemy First

Unlike the pilots' limited visual detection capability, MILDAR has a robust warning feature covering all sectors beyond the visual range. This feature not only improves the survivability but also widens the pilots' options including additional planning and reaction times, avoidance and ambush.

Key Features



Multiple Target Tracking



Terrain Profiling



Long Range and High Angular Resolution



Low Probability Of Intercept (LPI) Feature



Frequency Hopping



Solid State Technology

Technical Specifications

Track-While-Scan (TWS) capability helps the pilots detect and track the threats newly coming to the battlefield while tracking the current targets. MILDAR helps the pilots create a holistic perception of the close airspace and enhance their situational awareness.

MILDAR serves an infrastructure facilitating multiple target tracking and weapon engagement in compliance with potential targets and battlefields. MILDAR having frequency hopping and LPI features, has an inherent EW protection.

Operating Modes: Ground Surveillance, Air Surveillance, Targeting, Terrain Profiling (optimal)

Scan Type: Track While Scan (TWS)

Angular Coverage: 360°

Tracking Capability: 150

Maximum Range in Target Tracking: 27 km

Maximum Range in Terrain Tracking: 2,5 km

Operating Temperature: -30°C - +55°C

Electromagnetic Compatibility: MIL-STD-461F

